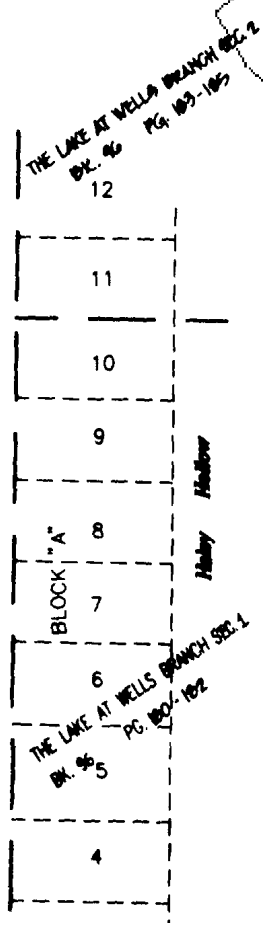
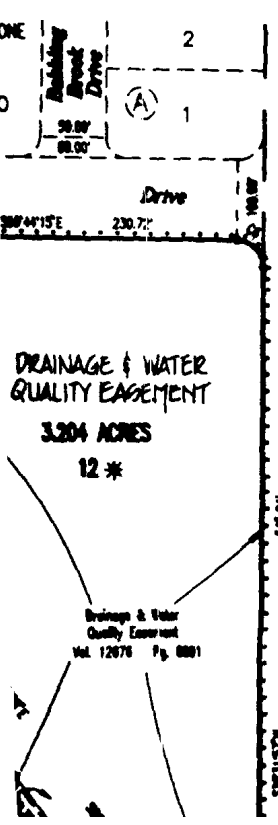
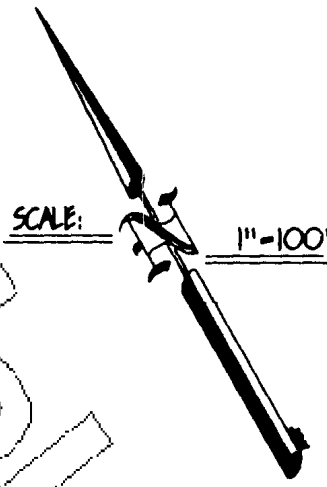


# SECTION TWO

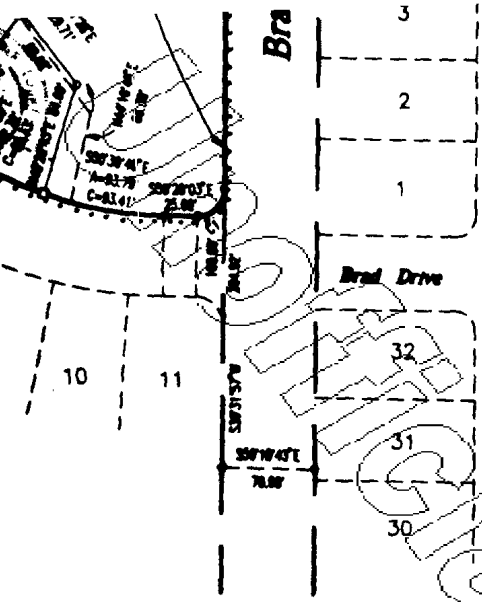


### LEGEND

- IRON PIN SET
- ⊙ IRON PIN FOUND
- CONCRETE MONUMENT SET
- ◻ CONCRETE MONUMENT FOUND
- B.L. BUILDING SETBACK LINE
- P.U.E. PUBLIC UTILITY EASEMENT
- D.E.I. DRAINAGE EASEMENT
- ..... APPROXIMATE SIDEWALK LOCATION
- OWNER: JACK'S POND LIMITED PARTNERSHIP
- ACREAGE: 5.091
- SURVEY: NELSON-MERRILL SURVEY NO. 70
- NO. OF LOTS: 12
- NO. OF BLOCKS: 1
- F.E.M.A. MAP NO. 48453C-0155E
- TRAVIS CO., TX. DATED: 06/18/93
- 19 LOT NUMBER
- Ⓐ BLOCK NUMBER
- DATE: JULY 22, 1996

Copyright

\* LOT 12, BLOCK "J" IN ITS ENTIRETY IS DEDICATED AS A WATER QUALITY AND DRAINAGE EASEMENT TO THE CITY OF AUSTIN.



DELTA
90°00'00"
57°13'48"
02°35'52"
87°34'09"
48°31'44"
90°18'13"

ENGINEER:  
 CARLSON ENGINEERING AND ASSOCIATES, INC.  
 3401 Slaughter Lane West  
 Austin, Texas 78748  
 Ph:(512) 280-5160 Fax:(512) 280-5165

SURVEYOR:  
 CARLSON ENGINEERING AND ASSOCIATES, INC.  
 3401 Slaughter Lane West  
 Austin, Texas 78748  
 Ph:(512) 280-5160 Fax:(512) 280-5185

**C8-94-0203.01.1A**

JOB NO. 3458  
 SHEET NO. 1 OF 3

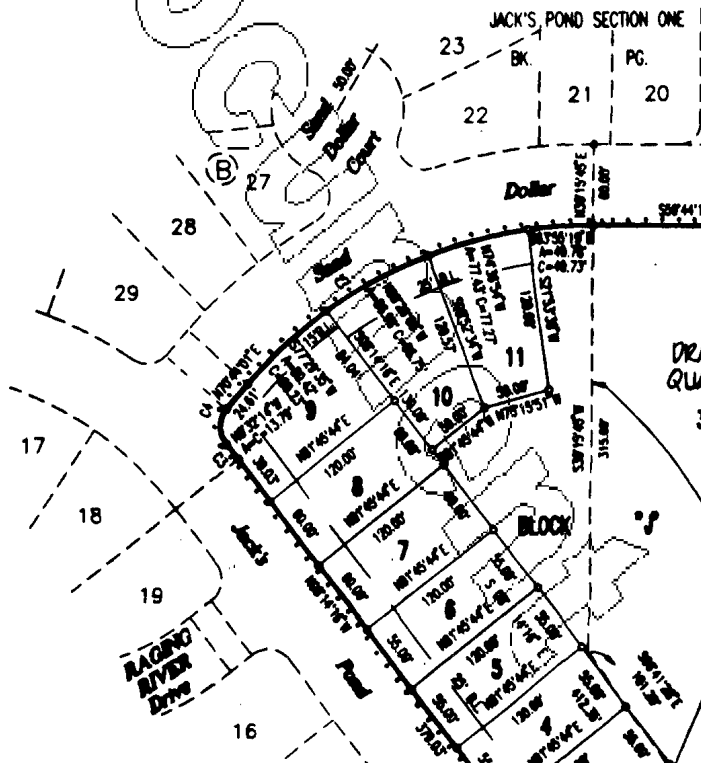
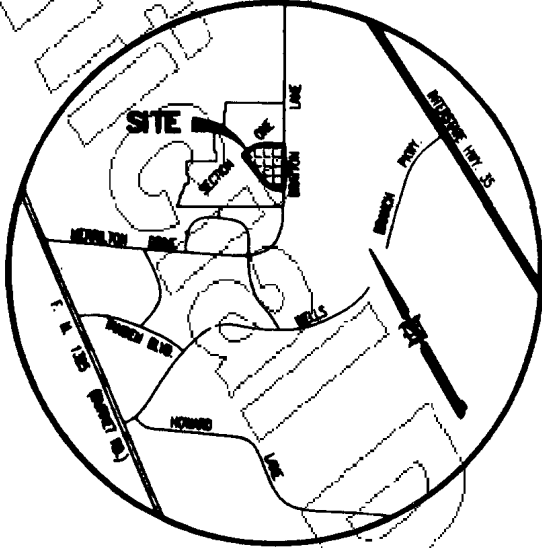
\$ 81<sup>00</sup>

A4496

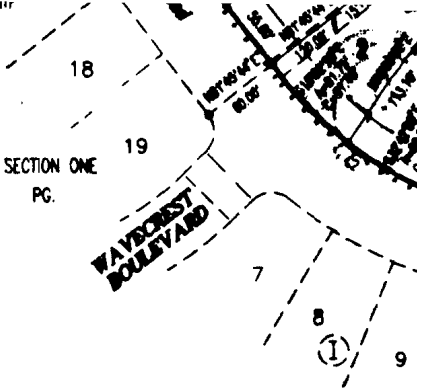
12/26/96

# JACK'S POND

- LOCATION MAP -  
NOT TO SCALE



WAVECREST BOULEVARD  
BK. PG.



SPAN FIELD

CURVE	RADIUS	LENGTH	TANGENT	CHORD	BEARING
C1	20.00'	31.42'	20.00'	20.28'	S75°31'57" W
C2	300.00'	200.24'	143.83'	259.30'	N33°51'00" W
C3	304.23'	13.79'	6.90'	13.79'	N09°32'12" W
C4	20.00'	28.47'	17.25'	28.13'	N28°58'34" E
C5	340.01'	294.61'	157.22'	285.52'	S04°30'07" E
C6	20.00'	31.51'	20.09'	28.35'	S14°36'09" E